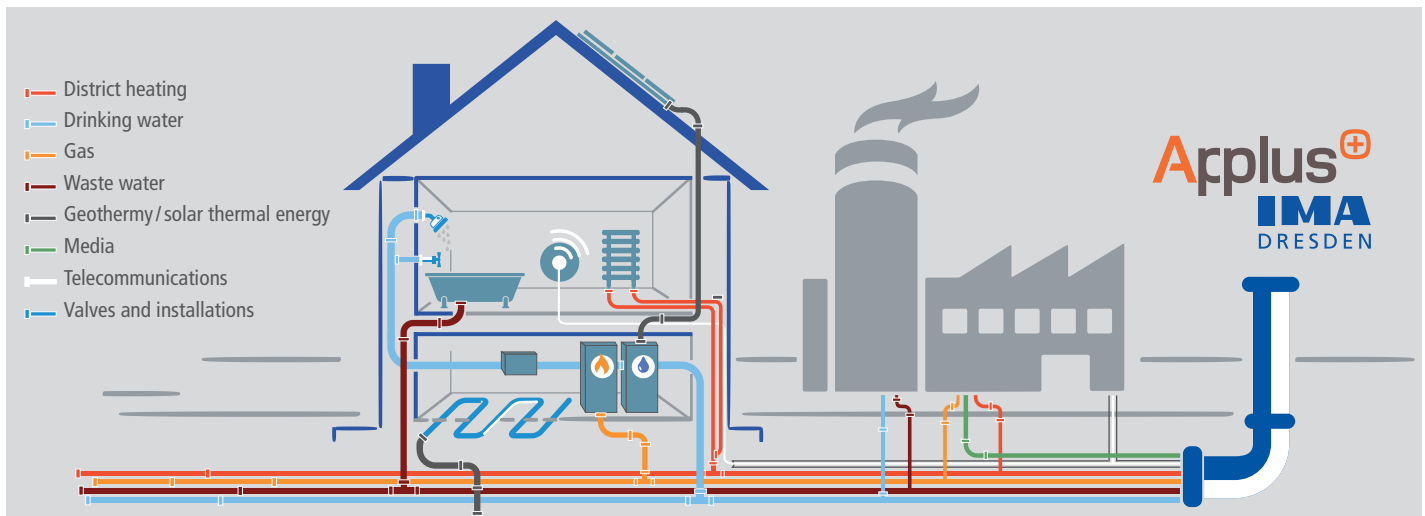


---

## **MATERIAL, PRODUCTS AND SYSTEMS TESTING TESTING & INSPECTION. PIPE SYSTEMS, FITTINGS AND WATER TREATMENT DEVICES**

As an independent, renowned and accredited testing facility, inspection agency and certification body, we assist national and international manufacturers, operators, suppliers and experts with all key issues relating to product compliance, life cycle, condition assessment, material characterisation and quality and safety standards.

# PIPE SYSTEMS TESTINGS



With physical, mechanical, hydraulic and acoustic tests we investigate every detail – from the materials and components to the system as a whole.

## INSTALLATIONS INSIDE BUILDINGS

The laboratories offer various possibilities for testing of products and systems of building and installation technology. You will benefit from our synergies through international contacts to global certification bodies.

### PRODUCTS

- Plastic pipe systems
- Metal pipe systems
- Multilayer pipe systems

### APPLICATIONS

- Drinking water
- Heating, climate
- Gas



## TESTING RANGE

### MATERIALS

- Thermal analyses
- Physical tests
- Materialography
- Surface quality testing
- Testing under:
  - static load
  - cyclic load
  - impact load

### PIPES AND FITTINGS

- Static and dynamic internal pressure tests
- Long term pressure tests
- Thermal cycling tests
- Vacuum tests
- Determination of pressure loss

### SYSTEMS

- Internal pressure test without and under bending
- Pull-out tests
- Pressure shock tests
- Thermal cycling tests
- Bending cycle tests
- Vacuum tests

#### Internal pressures

up to 200 bar

#### Flow rates

up to 700 m<sup>3</sup>/h

#### Dimensions

up to 250 mm

# DISTRICT HEATING AND GEOTHERMY

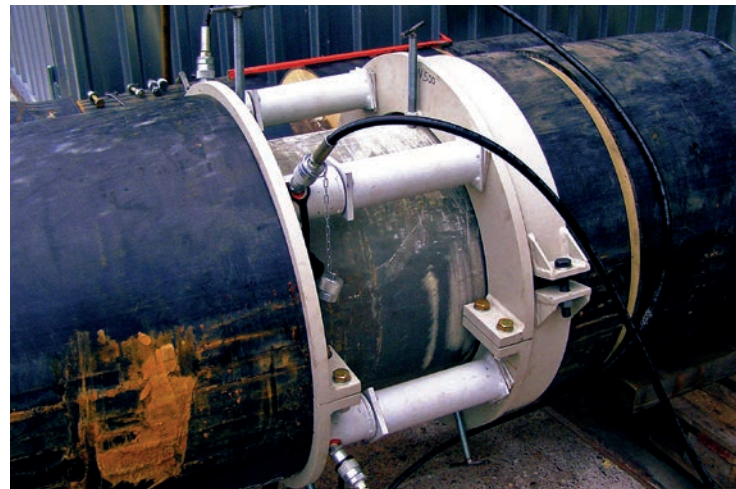
Our range of services includes testing the coating, the insulation materials and the bonded system as a whole.

## APPLICATIONS

- District heating
- District cooling
- Local heating

## PRODUCTS

- Pipe systems with steel media piping
- Pipesystems with flexible media piping
- Bonded pipe systems
- Bonded twin pipe systems
- Geothermal probes
- Horizontal earth collectors



## TESTING RANGE

### MATERIALS

- Thermal analyses
- Physical tests
- Materialography
- Surface quality testing
- Corrosion resistance

### VALVES

- Tensile strength
- Pressure strength
- Bending strength
- Actuating moment

### PIPES AND FITTINGS

- Thermal conductivity
- Long-term creep resistance
- Long-term temperature resistance
- Internal pressure resistance
- Shear strength
- Pressure strength

# INSPECTIONS

As an accredited inspection body, we can provide support extending well beyond type testing:

- Inspection of factory production control
- Audit testing
- Sample collection including the valuation of the quality of drinking water
- Assurance of product properties



According to accreditation certificate



# SUPPLY AND DISPOSAL



Our broad range of testing for supply and disposal systems begins with type testing, continues with condition assessments in use and ends with comprehensive testing of pipe rehabilitation products.

- Pipes and tanks made of glass fiber reinforced plastics (GFRP)
- Pipes and retention tanks made of thermosetting plastics
- Pipes, retention tanks and non-draining collection basins made of thermosetting plastics, reactive resins, textile fiber reinforced materials and thermoplastics

## PRODUCTS

- Thermoplastic pipes (smooth surface or profiled)
- Glass fiber reinforced thermosetting pipes (GFRP)
- Cured in place pipes
- Container

## APPLICATIONS

- Pressure pipes (gas, drinking water, waste water )
- Non-pressurized pipes (waste water, cable conduits)
- Industrial pipes
- Renovation products
- Container construction

### Internal pressure

up to 200 bar

### Temperature range

up to 250°C

### Dimensions

up to 2.000 mm

## TESTING RANGE

### MATERIALS

- Thermal analyses
- Physical tests
- Materialography
- Surface quality testing
- Testing under:
  - static load
  - cyclic load
  - impact load

### PIPES AND FITTINGS

- Temperature internal pressure tests
- Pull-out tests
- Pressure shock tests
- Thermal cycling tests
- Bending cycle tests
- Determination of pressure loss
- Cyclical internal pressure tests

### SYSTEMS

- Static and dynamic internal pressure tests
- Temperature internal pressure test
- Thermal cycling tests
- Vacuum tests
- Determination of pressure loss

### VALVES

### FITTINGS

### COMPENSATORS

# IMA TEST MARK

The test mark of Applus+ IMA Dresden gives you a recognised seal of quality for your products and manufacturing process, showing that your construction products match their type and are safe and reliable. In addition, we award the IMA certification mark based on technical specifications to assess product compliance. Independent inspections and monitoring by IMA prove the quality of your products.



# SANITARY & BUILDING VALVES, WATER TREATMENT AND CONNECTION SAFETY

The range of services is supplemented by tests of the whole range of valves including various forms of water treatment devices. Additional to physical, hydraulic and mechanical testing Applus+ IMA Dresden also offer acoustic testing.

## PRODUCTS

- Sanitary and building valves
- Shutoff valve and tapping valves
- Protection valves and hose lines
- Devices for water treatment
- Taps

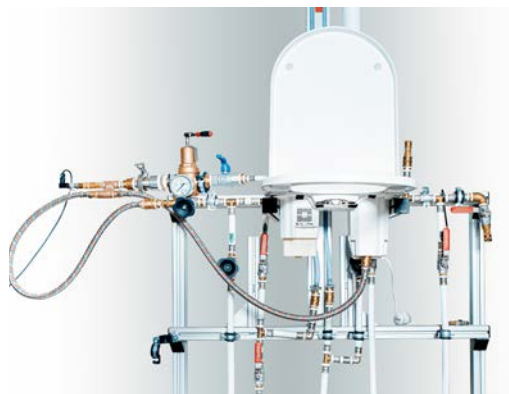
## APPLICATIONS

- Drinking water
- Heating/airconditioning
- Gas
- Industry



## TESTING RANGE

- Functional reliability tests
- Mechanical tests
- Hydraulic tests
- Tightness tests
- Durability tests
- Functional tests
- Chemical analyses
- Corrosion resistance



## ACOUSTIC TESTS



We check the noise characteristics of fittings and devices of water installations by measuring the valve noise level. For this purpose, the sound emitted by the valves is transmitted onto a measuring wall in our special testing laboratory, which records the airborne sound.

- Acoustic test acc. to DIN EN ISO 3822

## BENEFIT FROM THE COMPETENCE OF APPLUS+ IMA DRESDEN FOR YOUR CONSTRUCTION PRODUCTS.

IMA Materialforschung und Anwendungstechnik GmbH, in short Applus+ IMA Dresden, is the development and test centre which can speed up the process for your new developments and ensure that they are suitable for the market. As an independent test provider we guarantee reliable results and strict confidentiality.

Whenever it comes down to strength, resistance, validation or material characteristic data, then Applus+ IMA Dresden can combine the efforts with regard to test standards, approval and certification tests as well as experimental investigations. We have over 10,000m<sup>2</sup> of test area in certified and accredited testing laboratories where we can test innovative products and technologies from aerospace, rail vehicle, automotive and medical technologies, shipbuilding, plastic, metal and electrical industries and other industrial branches. You can rely on us: the testing tasks at Applus+ IMA Dresden will be processed according to the current state of the art technology and enjoy worldwide acceptance and trust.

Since May 2021, IMA Dresden is part of Applus Laboratories.

Please do not hesitate to contact us for any questions or inquiries at [sales@ima-dresden.de](mailto:sales@ima-dresden.de)



## CONTACT

IMA Materialforschung und Anwendungstechnik GmbH  
Wilhelmine-Reichard-Ring 4  
01109 Dresden  
Germany

phone: +49 (0)351 8837-6200  
fax: +49 (0)351 8837-530  
mail: [sales@ima-dresden.de](mailto:sales@ima-dresden.de)

### PHOTO CREDITS

Jan Gutzeit: Page 2) Building Services  
Lichtwerke Design Fotografie: others

[www.ima-dresden.de](http://www.ima-dresden.de)  
[www.appluslaboratories.com](http://www.appluslaboratories.com)



Visit us: [in](#) [X](#) [Twitter](#)